



ENERGY MANAGEMENT SOLUTIONS
BY

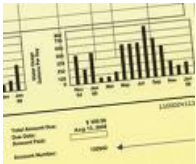
CARTER CONTROLS &
CCM
MANAGEMENT SYSTEMS

Automation technology for HVAC systems.

THE CHALLENGE



HVAC systems are typically the most expensive electrical devices to operate, and are not normally monitored for effectiveness and efficiency. When service is required, it's normally too late for comfort.



Bills are high and inconsistent, due to wasteful heating and cooling.



Meters are spinning uncontrollable and often unmanageable.



Thermostats are a challenge to keep programmed due to wayward fingers. Only monitoring the temperature of the room in which they are located. Ineffective when monitoring multiple rooms.



Lockboxes are demoralizing and really do not keep out occupants. They cause interruptions to productivity when it is required to change thermostat settings.

WHAT IS AUTOMATION?

Definition: **Replacement of human resources with technology:** a system in which a process has been converted to one that replaces or minimizes human effort with mechanical or electronic equipment.



BUILDING AUTOMATION WITH
A NEW SPIN — SAVINGS

Intricate Control
Made Simple

WebStat®

WHAT IS WebStat[®]?

- ***Money saving*** energy management system
- ***Network configured*** system, that puts the control of HVAC systems at the finger tips of authorized persons through computer interface.
- ***Scheduling System*** that *automatically controls* when and how systems operate 24/7/365
- ***Monitoring system*** that *communicates* how systems are operating and send alarms when errors occur
- ***Minimizes interruptions*** of comfort and convenience
- ***Creates Happy Occupants and Saves Money!***

LOG IN


WebStat - Internet Explorer provided by Dell

http://prmprestmont.no-ip.biz/ord?station:jslob/Services/WebService/WebStatLoginControl/Login.jsp

Favorites WebStat


Honeywell

WebStat®



Powered by **niagara** AX FRAMEWORK®

WebStat®, Copyright © 2006, Version 01.02.05, Feb 05 2008



User ID :

Password :

Login Reset

[Forgot User ID or Password?](#)

OVERVIEW

The screenshot displays the Honeywell WebStat OverviewControl interface in a web browser. The browser's address bar shows the URL `http://prmprestmont.no-ip.biz/OverviewControl`. The interface includes a navigation menu with tabs for Overview, Floor Plans, Schedules, Alarms, Trends, Users, Thermostats, and System. The current page is the Overview tab, which shows a list of thermostats. The top of the interface features the WebStat logo, the date and time (Oct 26, 2009 08:43am), and a Logout link. The main content area is divided into sections for Current Temperature, Setpoints, Schedule, Rel. Humidity, and Alarm. The Current Temperature section lists five thermostats: INF_KIT_HALL, EPS2_PS1, OFF_YT_EPS1, PS2_4K1, and EXP_4K2. Each thermostat entry shows its current temperature (72°F), setpoint (72°F), mode (Cooling), and occupancy status (Occupied). The Rel. Humidity section shows the relative humidity for each thermostat: 77%, 62%, 65%, 78%, and 80% respectively. The interface also includes an Override button for each thermostat.

Thermostat	Current Temperature	Setpoint	Mode	Occupancy	Rel. Humidity
INF_KIT_HALL	72°F	72°F	Cooling	Occupied	77%
EPS2_PS1	72°F	72°F	Cooling	Occupied	62%
OFF_YT_EPS1	72°F	72°F	Cooling	Occupied	65%
PS2_4K1	72°F	72°F	Cooling	Occupied	78%
EXP_4K2	72°F	72°F	Cooling	Occupied	80%

FLOOR PLAN VIEW

Floor Plans - Internet Explorer provided by Dell

http://prmprestmont.no-ip.biz/FloorPlanControl

File Edit View Favorites Tools Help

★ Favorites Floor Plans

WebStat® Jul 07, 2009 11:56am ? Help Logout

Overview **Floor Plans** Schedules Alarms Trends Users Thermostats System

Logged in as SysAdmin Outside Temperature: 96 °F Local Weather

Floor Plans View Floor Plan Setup Floor Plan


Floor Plan Name: Prestmont


¹ Click on the thermostat icon to view its details

EPS2_PS1 Thermostat

Thermostat Status Online

Current Temperature 72 °F

Schedule Mode 

System Mode  Cool

Discharge Temperature 60 °F

Relative Humidity 63 %

Terminal Load 74%

Lockout Status Enabled All

Fan Switch On

Add New Floor Plan

OFF_YT_EPS...

INF_KIT_HA...

EXP_4K2

PS2_4K1

EPS2_PS1

12:10 PM

SCHEDULE OVERVIEW

Schedule Overview - Internet Explorer provided by Dell
















http://prmprestmont.no-ip.biz/ScheduleControl

WebStat®

May 26, 2009 08:58am ? Help Logout

Overview Floor Plans Schedules Alarms Trends Users Thermostats System

Logged in as SysAdmin Outside Temperature: 71 °F Local Weather

Schedule	Assigned Thermostats	Current State	Current State Starts	Current State Ends
 INF_KIT_HALL	 INF_KIT_HALL	 Occupied	6:00 AM	6:30 PM
 EPS2_PS1	 EPS2_PS1	 Occupied	7:30 AM	6:30 PM
 EXP_4K2	 EXP_4K2	 Occupied	7:30 AM	6:30 PM
 OFF_YT_EPS1	 OFF_YT_EPS1	 Occupied	6:00 AM	6:30 PM
 EPS2_PS1	 PS2_4K1	 Occupied	6:00 AM	6:30 PM

9:01 AM

WEEKLY SCHEDULE

Schedule Weekly - Internet Explorer provided by Dell

http://prmprestmont.no-ip.biz/ScheduleControl

File Edit View Favorites Tools Help

★ Favorites Schedule Weekly

WebStat® Jul 07, 2009 11:57am ? Help Logout

Overview Floor Plans **Schedules** Alarms Trends Users Thermostats System

Logged in as SysAdmin Outside Temperature: 96 °F Local Weather

Schedules

INF_KIT_HALL

[EPS2_PS1](#)

[EXP_4K2](#)

[OFF_YT_EPS1](#)

[EPS2_PS1](#)

[Add New Schedule](#)

Weekly Special Events Assign Thermostats

Schedule Name * INF_KIT_HALL

1 Fields marked with * are mandatory 2 Default is Occupied
3 To move an event, press shift and drag the event up or down

	Sunday	Monday	Tuesday	Wednesday	Thursday	Friday	Saturday
12:00 AM	Unoccupied	Unoccupied	Unoccupied	Unoccupied	Unoccupied	Unoccupied	Unoccupied
01:00 AM							
02:00 AM							
03:00 AM							
04:00 AM							
05:00 AM							
06:00 AM		Occupied	Occupied	Occupied	Occupied	Occupied	
07:00 AM		Occupied	Occupied	Occupied	Occupied	Occupied	
08:00 AM		Occupied	Occupied	Occupied	Occupied	Occupied	
09:00 AM		Occupied	Occupied	Occupied	Occupied	Occupied	
10:00 AM		Occupied	Occupied	Occupied	Occupied	Occupied	

Assigned Thermostats

INF_KIT_HA...

Selected Event Start Time: End Time:

Selected State ☐ Occupied ☒ Unoccupied ☐ Standby

SPECIAL EVENT SCHEDULING

Schedule Special Events - Internet Explorer provided by Dell

http://prmprestmont.no-ip.biz/ScheduleControl

Live Search

Favorites Schedule Special Events WebStat Overview

WebStat® Honeywell

May 26, 2009 09:01am ? Help Logout

Overview Floor Plans **Schedules** Alarms Trends Users Thermostats System

Logged in as SysAdmin Outside Temperature: 73 °F | Local Weather

Schedules Weekly **Special Events** Assign Thermostats

US Holidays Load New Event

Name	Summary	Edit	Delete
New Years Day	Any Weekday on 1 of January in Any Year	Edit	Delete
Memorial Day	Monday in Week 5 of May	Edit	Delete
Independence Day	Any Weekday on 4 of July in Any Year	Edit	Delete
Labor Day	Monday in Week 1 of September	Edit	Delete
Thanks Giving Day	Thursday in Week 4 of November	Edit	Delete
Christmas Day	Any Weekday on 25 of December in Any Year	Edit	Delete
Thanks Giving Friday	Friday in Week 4 of November	Edit	Delete

Delete Reset Save

INF_KIT_HALL

[EPS2_PS1](#)

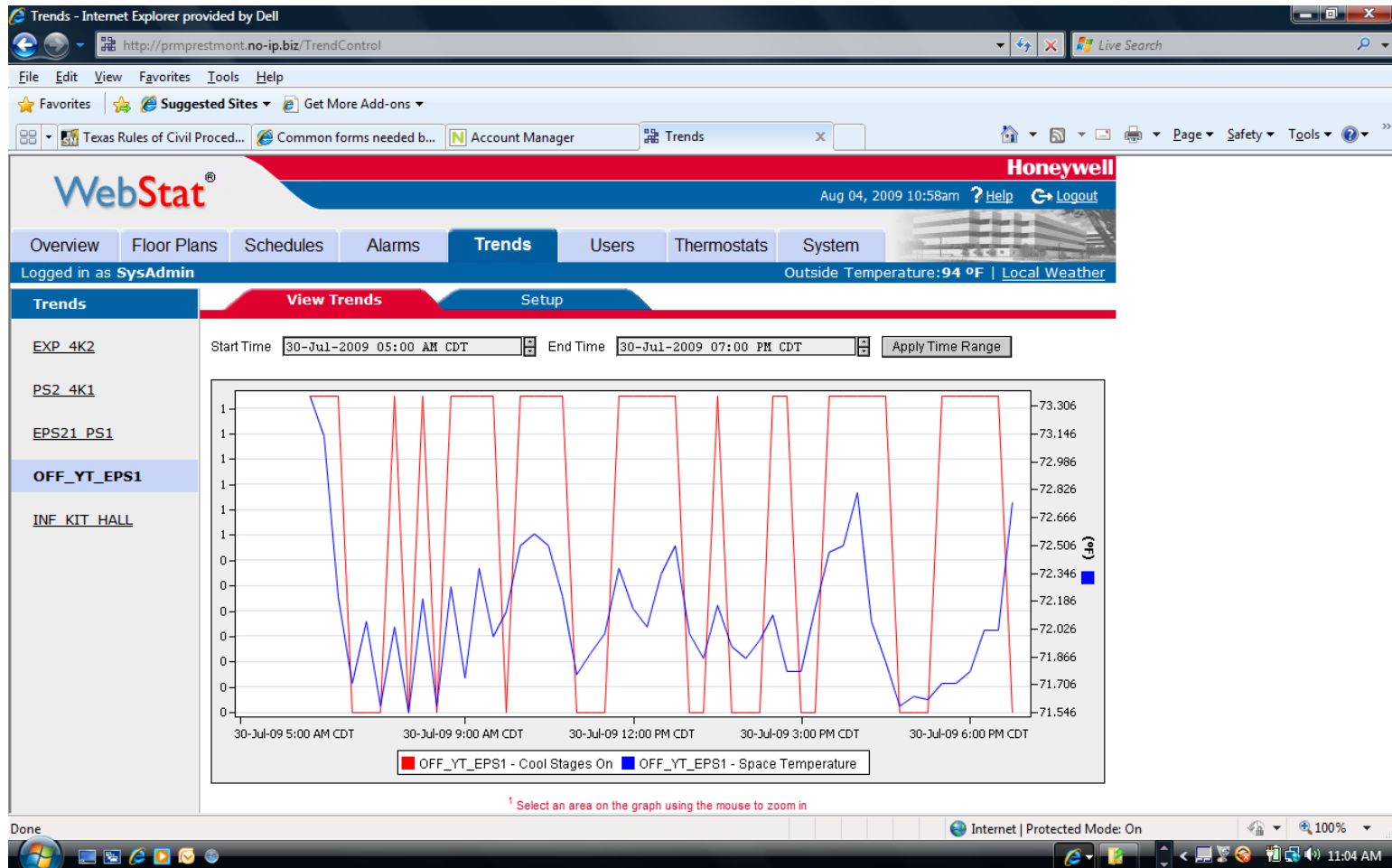
[EXP_4K2](#)

[OFF_YT_EPS1](#)

[EPS2_PS1](#)

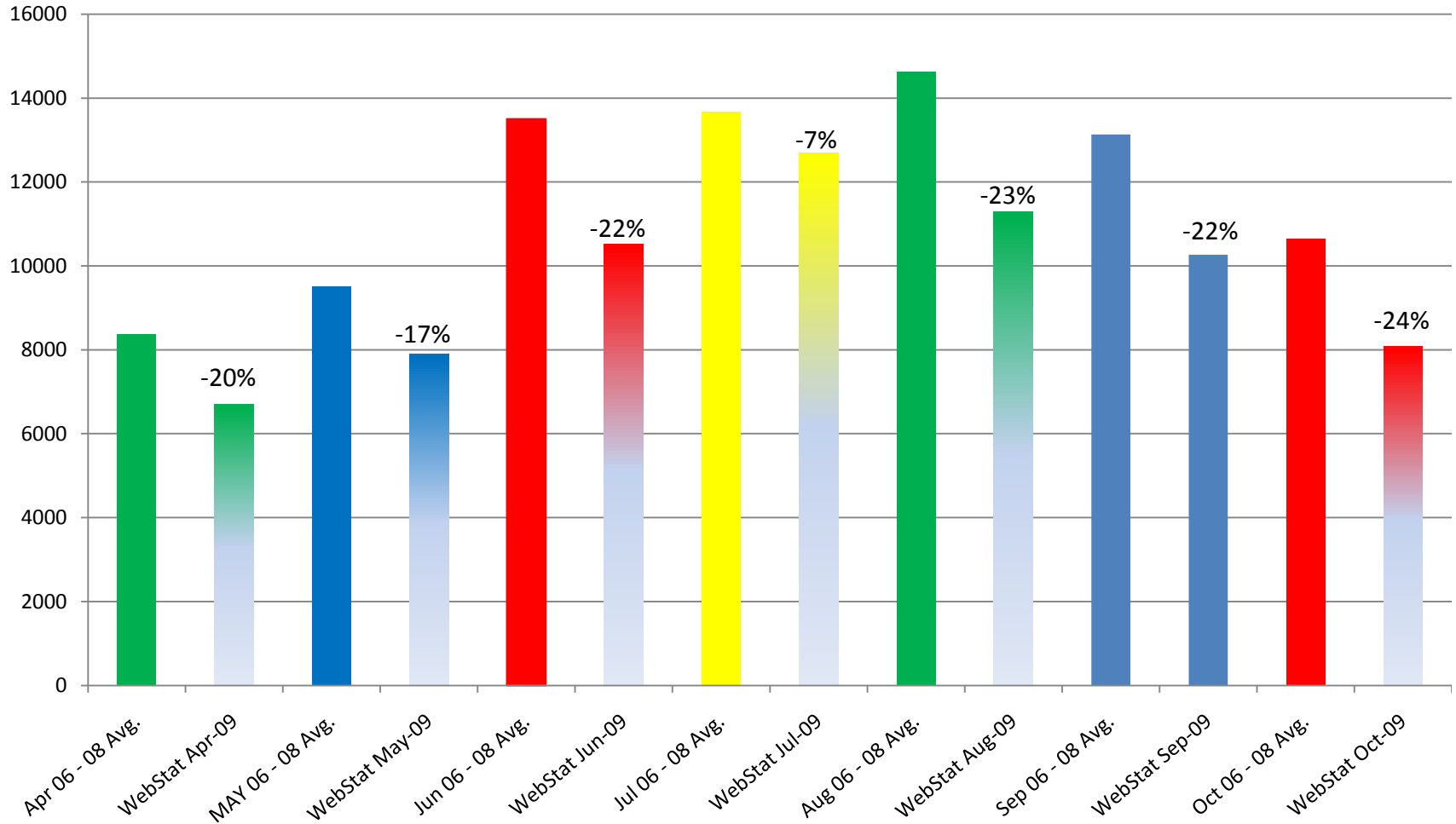
9:03 AM

TRENDING



WebStat[®] RESULTS

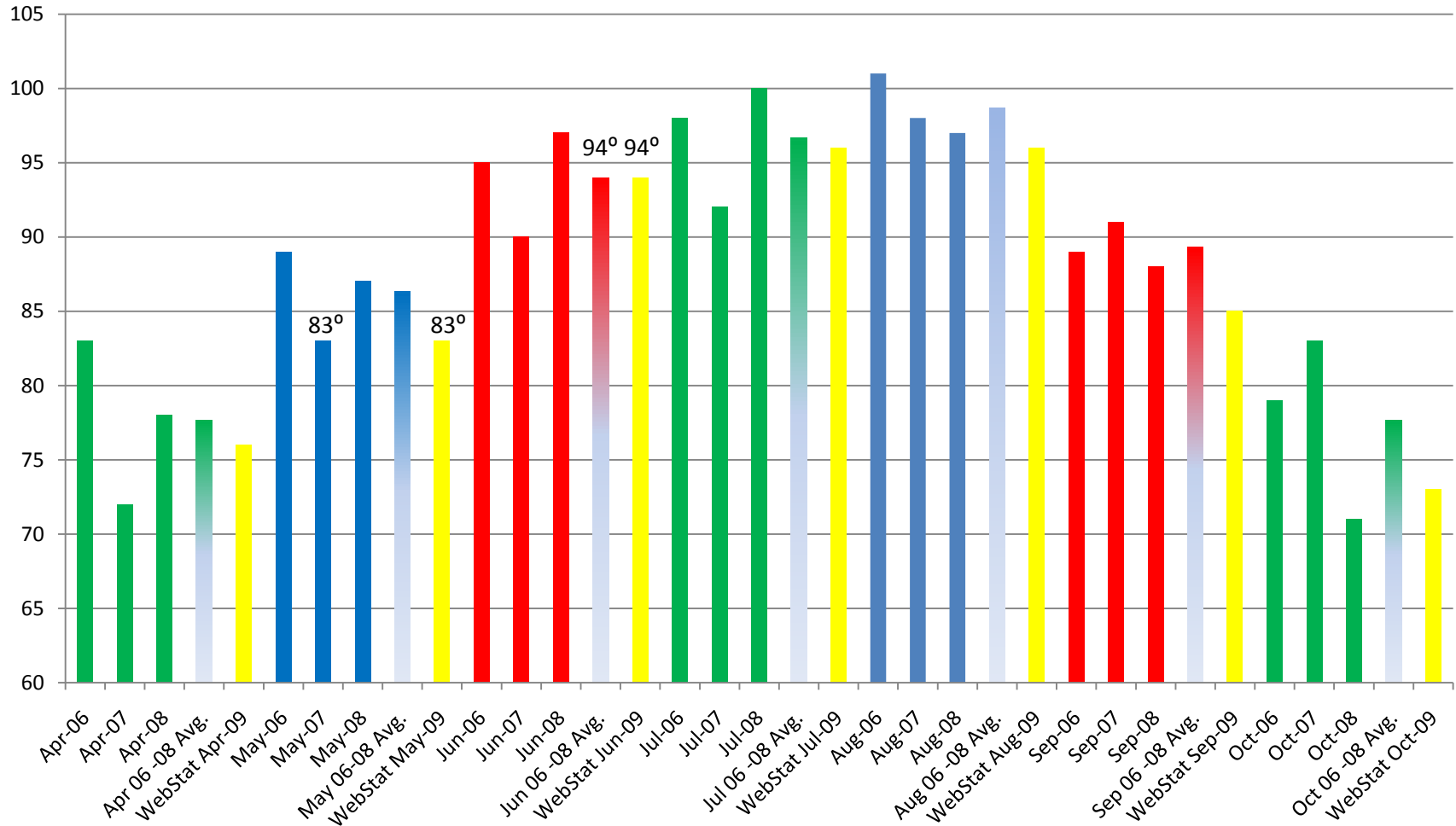
AVERAGE MONTHLY SAVINGS



This graph depicts the success of our Honeywell WebStat HVAC automation system as compared to the last three years average. The facility which this data was obtained, operates with seven HVAC units and is occupied 5 days a week 12 hours a day. Thermostats were replaced with sensors, and the indoor climate is controlled through computer interface which is password protected. The average kWh saved is 19%.

WebStat[®] RESULTS

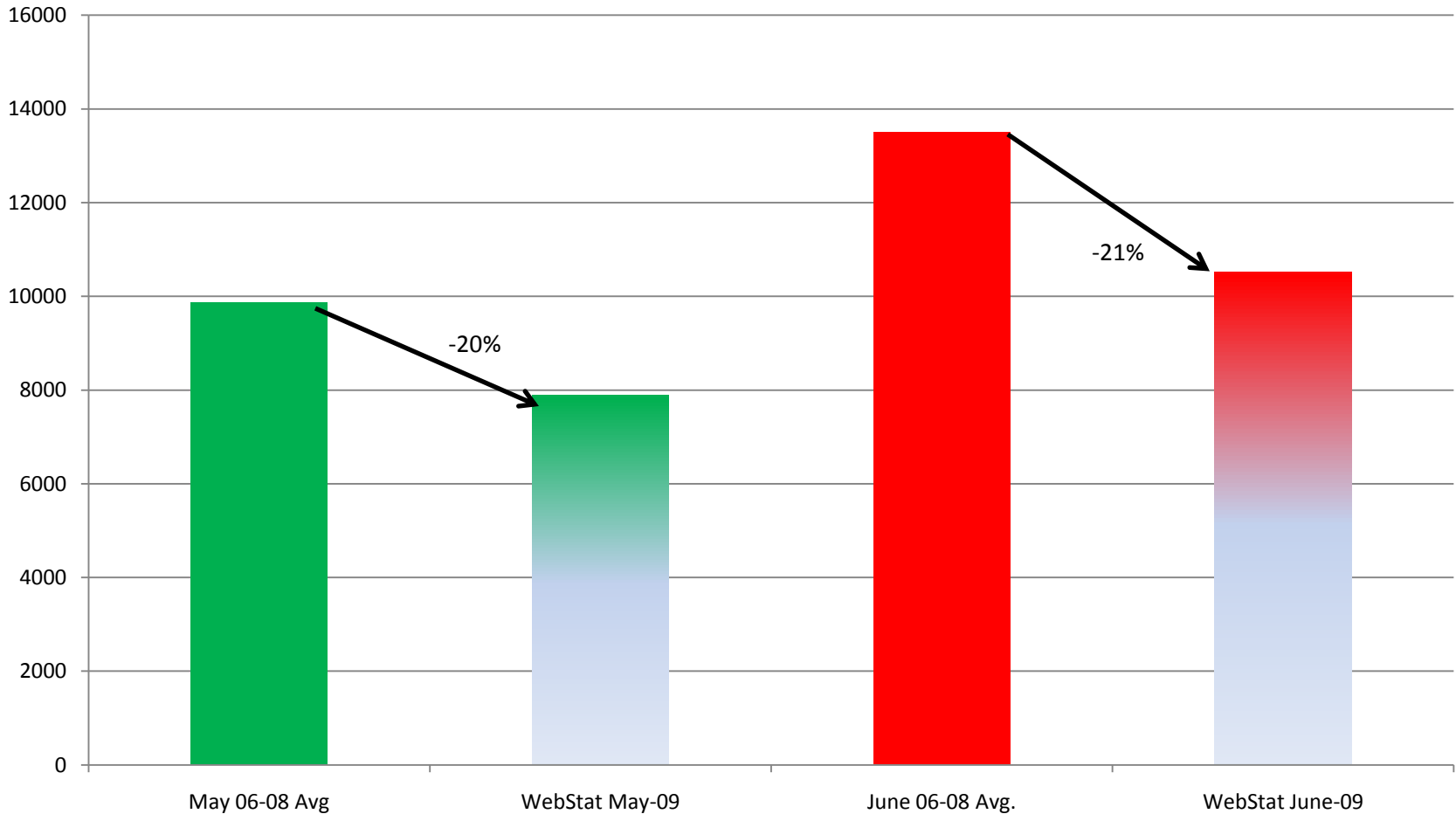
AVERAGE TEMPERATURE BY MONTH



This graph illustrates four years of average high temperatures by month. Outdoor temperature influences the operation of HVAC systems. May 07 and May 09 have the exact same average high temperature of 83 degrees. The average of June and June 09 also has the same

WebStat[®] RESULTS

ENERGY SAVINGS COORELATION WITH TEMPATURE



Using this data in correlation with "Average Temperature by Month" graph, which shows May 07 and May 09 with the exact same average high temperature of 83 degrees and June 06-08 having the same average high temperature as June 09, May 09 shows a 20% reduction of kWh consumed and June shows a 21% reduction.

WebStat[®] BENEFITS

- ***STANDARD VIEWS*** THAT ARE SIMPLE TO NAVAGATE.
- ***MORE RELIABLE*** THAN TYPICAL THERMOSTATS.
- ***SECURE*** ACCESS TO KEEP TEMPATURE SETTING CONSISTENT.
- ***SIMPLE*** WEB INTERFACE ON THE NETWORK OR INTERNET.
- ***CONTROLLED*** CLIMATE 100% OF THE TIME.
- ***ENERGY SAVINGS*** BY ENERGERGY MANAGEMENT.
- ***MONEY SAVING*** TECHNOLOGY.

WebStat[®] INSTALLED EQUIPMENT?



Computer: Used to communicate with the WebStat system to set and make program changes. Replaces the hassle of adjusting traditional thermostats.



Internet Access Point: Device installed as part of your normal network to access the internet and to access your network from the internet.



Network Access Point: Device installed as part of your normal network to communicate with computers, printers and other electronics.



WebStat Controller: The communication hub between computers and heating/air conditioning units. Used to program thermostat controllers.



Thermostat Controller: Communication device between heating and air conditioning units and the WebStat Controller.

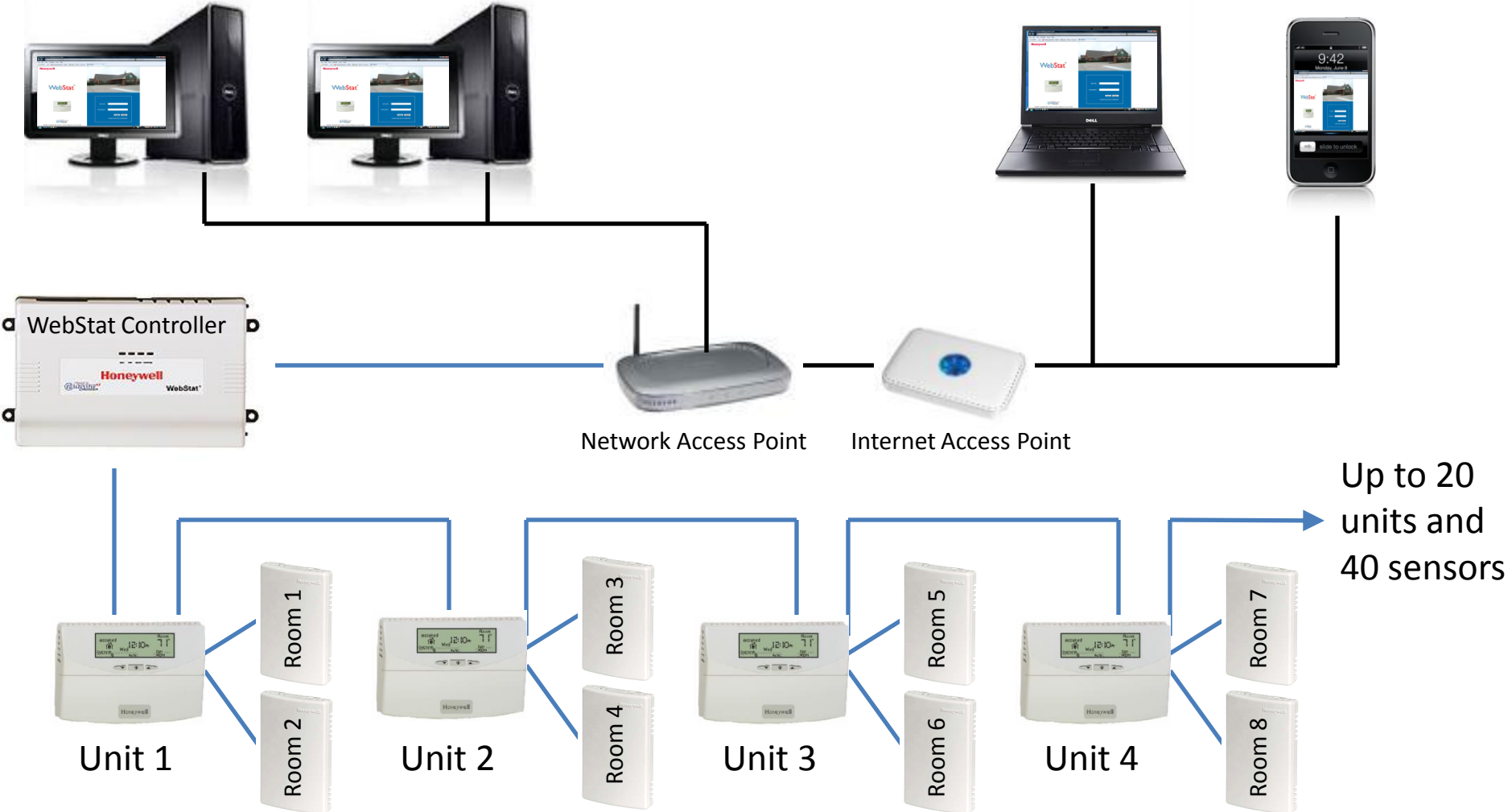


Room sensors: Sensor that monitors the temperature of a room, and communicates with the thermostat controller.

WebStat[®] NETWORK CONFIGURATION?

NETWORK ACCESSABLE

INTERNET ACCESSABLE



Honeywell

WebStat[®]

Automate your climate and save
money and time TODAY!

**CARTER CONTROLS &
CCM
MANAGEMENT SYSTEMS**

For more information: www.CarterCM.com

Rick Carter . 972-816-8593 . Rick@CarterCM.com

Allie Boyter . 214-516-9901 . Allie@CarterCM.com